

Appendix D: Changes to the Submitted Policies Map

CHANGES TO THE SUBMITTED POLICIES MAP

February 2020



CHANGES TO THE SUBMITTED POLICIES MAP

Change No.	Policy Map Key Ref.	Reason for the Change	Proposed Change
PMC1	SS3, SS9, SC1 - Development Envelopes	To update the Policies Map following a review of the development envelope boundary at Scarcliffe.	Amend the development envelope at Manor Farm, Scarcliffe to include a stone barn building, with courtyard, fronting Main Street as shown in Appendix 1.
PMC2	SS4 - Strategic Site Allocation: Bolsover North	To correct the Policies Map to show the extent of the Strategic Site Allocation at Bolsover North.	Amend the site boundary of the Strategic Site Allocation: Bolsover North as shown in Appendix 2.
PMC3	SS6 - Strategic Site Allocation: Former Whitwell Colliery Site, SS6 - Area of Transition, SS3, SS9, SC1 - Development Envelopes & SS11 - Important Open Breaks	To update the Policies Map to include an Area of Transition to the north of the Strategic Site Allocation at the Former Whitwell Colliery Site and to make consequential changes to the Development Envelope and Important Open Break boundaries.	<p>Add an Area of Transition to the Strategic Site Allocation: Former Whitwell Colliery site and amend the Development Envelope to include this Area of Transition and amend the Important Open Break to exclude this Area of Transition as shown in Appendix 3.</p> <p>(Main Modifications MM19 to MM22 refer)</p>

PMC4	LC1 - Housing Allocations & SS3, SS9, SC1 - Development Envelopes	To update the Policies Map to reduce the extent of the allocated housing site c) Land between Shuttlewood Road and Oxcroft Lane, Bolsover (around Boleappleton Farm), and to make consequential changes to the Development Envelope boundary.	Amend the site boundary of Housing Allocation c) Land between Shuttlewood Road and Oxcroft Lane, Bolsover and amend the development envelope accordingly as shown in Appendix 4. (Main Modification MM34 refers)
PMC5	LC1 - Housing Allocations & SS3, SS9, SC1 - Development Envelopes	To update the Policies Map to remove the housing allocation s) Land at Glapwell Nurseries, Glapwell and to make consequential changes to the Development Envelope boundary in accordance with the methodology set out in the Development Envelope Review.	Delete the Housing Allocation s) Land at Glapwell Nurseries, Glapwell, and amend the Development Envelope accordingly as shown in Appendix 5. (Main Modification MM49 refers)
PMC6	LC1 - Housing Allocations	To update the Policies Map to remove the housing allocation v) Land east of Pleasley Pit, Pleasley following the completion of the development in 2019.	Delete the Housing Allocation v) Land east of Pleasley Pit, Pleasley as shown in Appendix 6. (Main Modification MM50 refers)
PMC7	LC7 - Existing Gypsy and Traveller Sites & LC5 - Gypsy and Traveller Site Allocations	To correct a factual error.	Change the Gypsies and Traveller Site at Pinxton from an Existing Site to an Allocated Site as shown in Appendix 7. (Main Modification MM59 refers)
PMC8	WC1 - Employment Land Allocations	To update the Policies Map to more accurately reflect the site boundary of the Employment Allocation at Explore Industrial Park, Steetley, following the grant of planning permission (Ref.	Amend the employment allocation to more accurately reflect the site boundary of Explore Industrial Park, Steetley and amend the development envelope at Steetley to align with this as shown in Appendix 8.

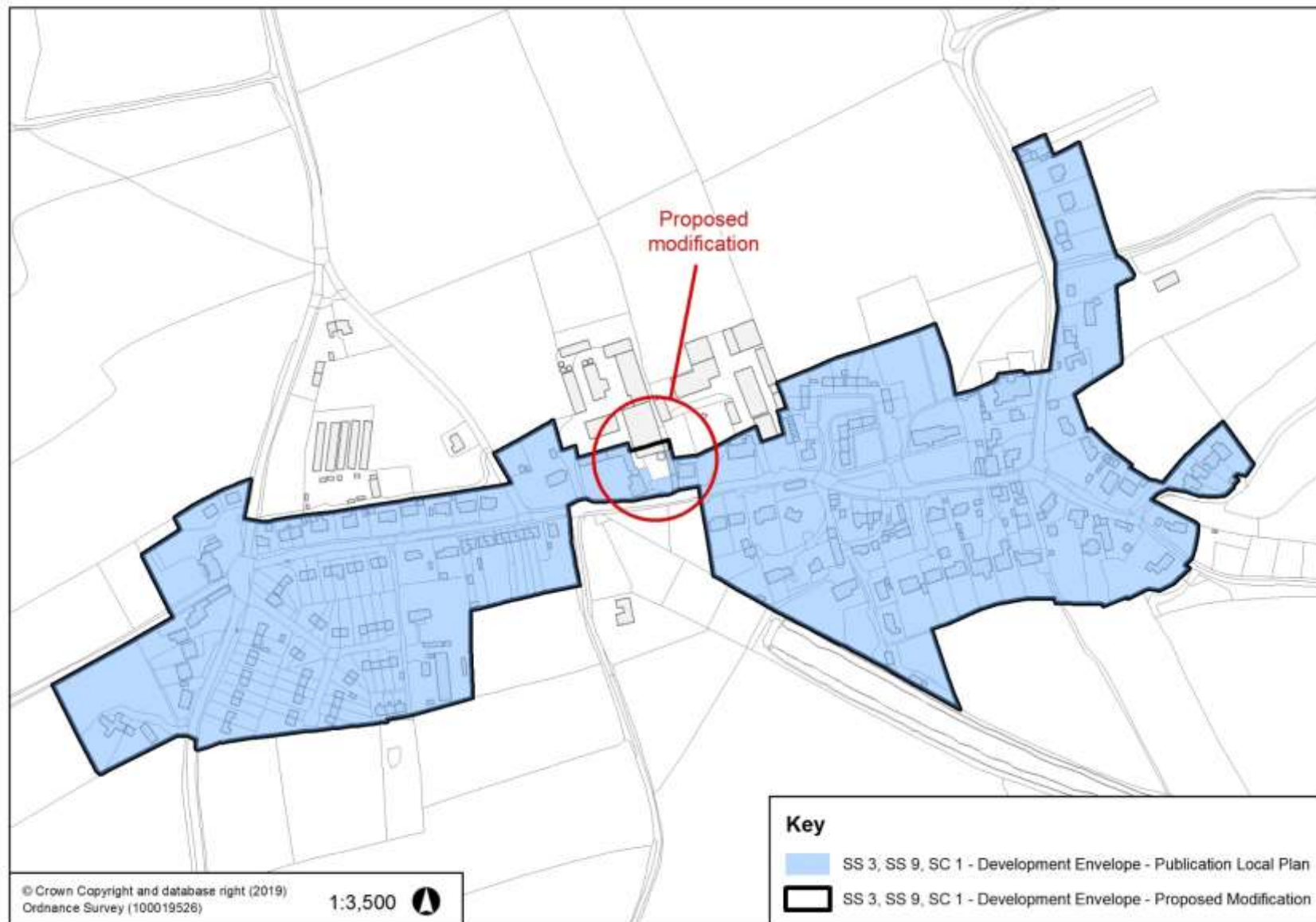
		08/00762/OUTEA) and to ensure that the development envelope boundary aligns with this.	A consequential change is also required to the boundary of the Local Wildlife Site (See PMC11 below).
PMC9	WC4 - Rough Close Works Explosive Safeguarding Zones	To update the Policies Map to clarify the extent of the inner and outer Explosive Safeguarding Zones around Rough Close Works, South Normanton and to show the Area of Wider Operations referred to in the policy.	<p>Rename Key title for WC4 - Explosive Safeguarding Zones to read as follows:</p> <p>“WC4 - Rough Close Works Explosive Safeguarding Zones”</p> <p>Delete the inner Explosive Safeguarding Zone (thereby the middle zone becomes the inner zone), and add an Area of Wider Operations as shown in Appendix 9.</p> <p>(Main Modification MM66 and Additional Modification AM26 refer)</p>
PMC10	WC8 - Edge of Town Centre Allocations & SS3, SS9, SC1 - Development Envelopes	To update the Policies Map to ensure that the Edge of Town Centre Allocations in South Normanton are sited outside the Rough Close Works Inner Explosive Safeguarding Zone and to make consequential changes to the Development Envelope boundary.	<p>Amend the boundary of the Edge of Town Centre Allocations in South Normanton to exclude land within the Inner Explosive Safeguarding Zone and amend the Development Envelope to align with this as shown in Appendix 10.</p> <p>(Main Modification MM72 refers)</p>
PMC11	SC9 - Local Wildlife Sites	To update the Policies Map to remove part of the Local Wildlife Site from within the employment allocation at Explore Industrial Park, Steetley.	Delete the part of the Local Wildlife Site that is within the Explore Industrial Park employment allocation as shown in Appendix 11.

PMC12	SC9 - Wildlife Corridors and Stepping Stones	To update the Policies Map to remove the Wildlife Corridors and Stepping Stones designation from Bolsover Moor Quarry as they are sited on a live minerals site.	Delete the Wildlife Corridors and Stepping Stones designations at Bolsover Moor Quarry as shown in Appendix 12.
PMC13	SC9 - Wildlife Corridors and Stepping Stones	To update the Policies Map to remove part of the Wildlife Corridors and Stepping Stones Designation from a site at Ball Hill, South Normanton.	Delete part of the Wildlife Corridors and Stepping Stones designation at Ball Hill, South Normanton as shown in Appendix 13.
PMC14	ITCR2 - Proposed Multi User Trails	To update the Policies Map to remove sections of the Proposed Multi User Trail from within the inner Explosive Safeguarding Zone around Rough Close Works, South Normanton.	Delete the two small distances of Proposed Multi User Trails that are within the inner Explosive Safeguarding Zone around Rough Close Works, South Normanton as shown in Appendix 14.
PMC15	ITCR2 - Existing Multi User Trails	To update the Policies Map to include Mag Lane, Langwith as an Existing Multi User Trail.	Amend the Existing Multi User Trail to include Mag Lane, Langwith as shown in Appendix 15. (Main Modification MM85 refers)
PMC16	ITCR9 - Cycle Routes & ITCR2 - Existing Multi User Trails	To update the Policies Map to include Sookholme Road, Shirebrook as an Existing Multi User Trail rather than as part of the Cycle Network.	Amend the Cycle Routes to delete Sookholme Road, Shirebrook and amend the Existing Multi User Trails to include Sookholme Road, Shirebrook as shown in Appendix 16. (Main Modification MM85 refers)
PMC17	ITCR2 - Existing Multi User Trails & ITCR2 - Proposed	To correct the Policies Map to show the Multi User Trail at Frithwood Lane, Creswell as a Proposed Multi User Trail rather than as an Existing Multi User Trail.	Amend the Existing Multi User Trails to delete Frithwood Lane, Creswell and amend the Proposed Multi User Trails to include Frithwood Lane, Creswell as shown in Appendix 17. (Main Modification MM85 refers)

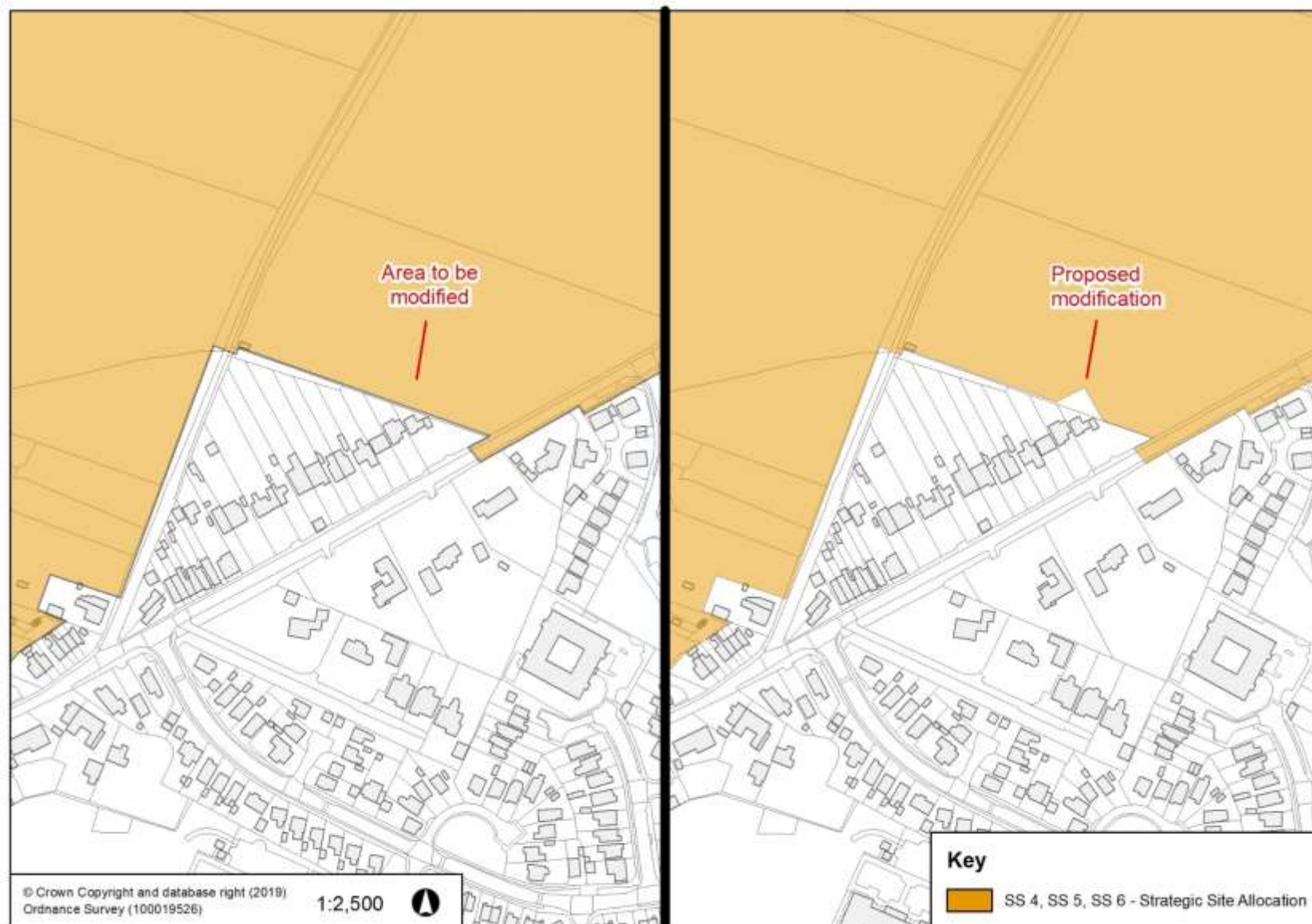
	Multi User Trails		
PMC18	ITCR2 - Proposed Multi User Trails	To update the Policies Map to add a new Proposed Multi User Trail to link existing trails outside the District.	<p>Add a new Proposed Multi User Trail (39) East of Hennymoor Farm to Hodthorpe as shown in Appendix 18.</p> <p>(Main Modification MM86 refers)</p>

Appendices

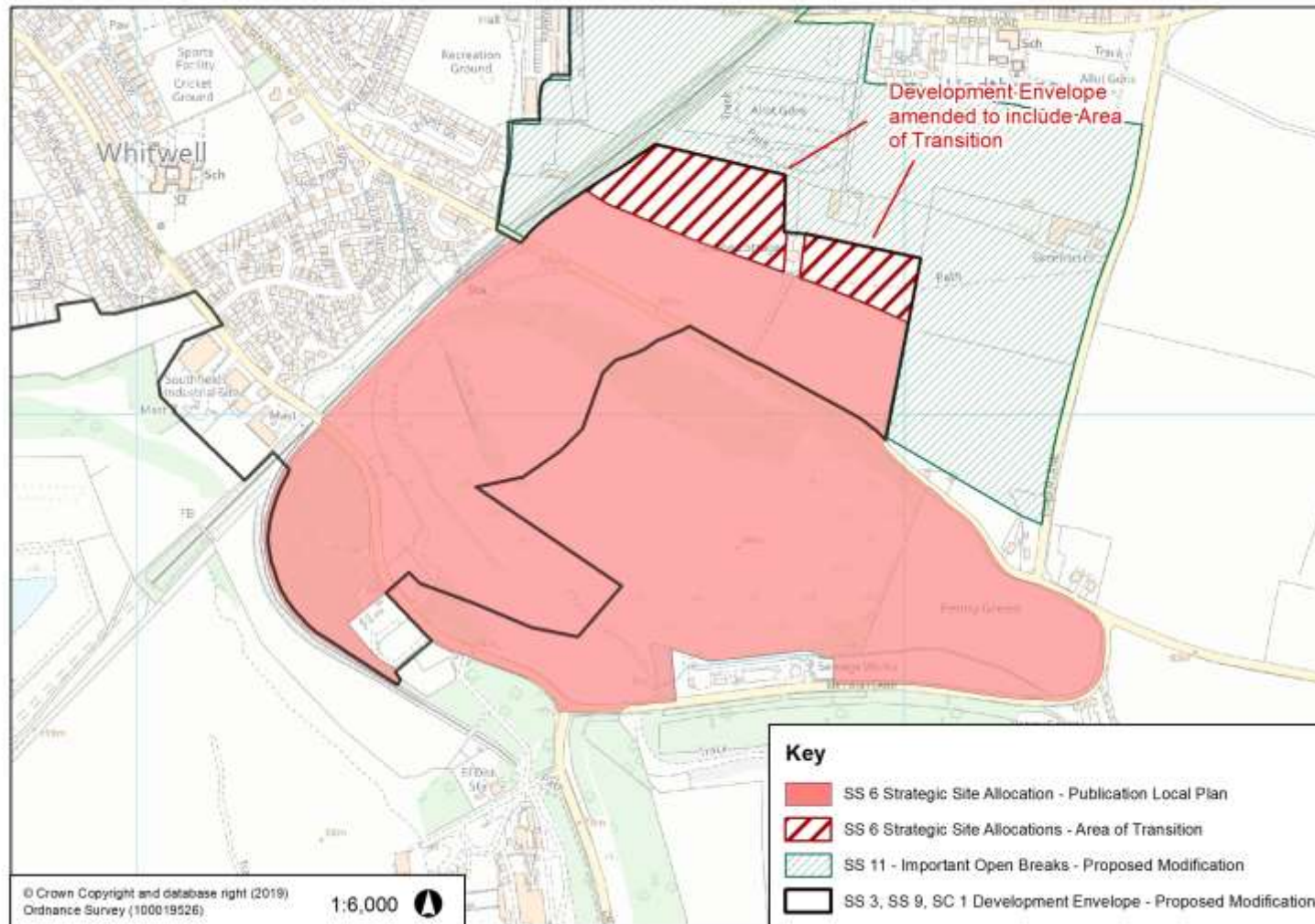
Appendix 1 – Amendment to development envelope boundary at Scarcliffe [PMC1]



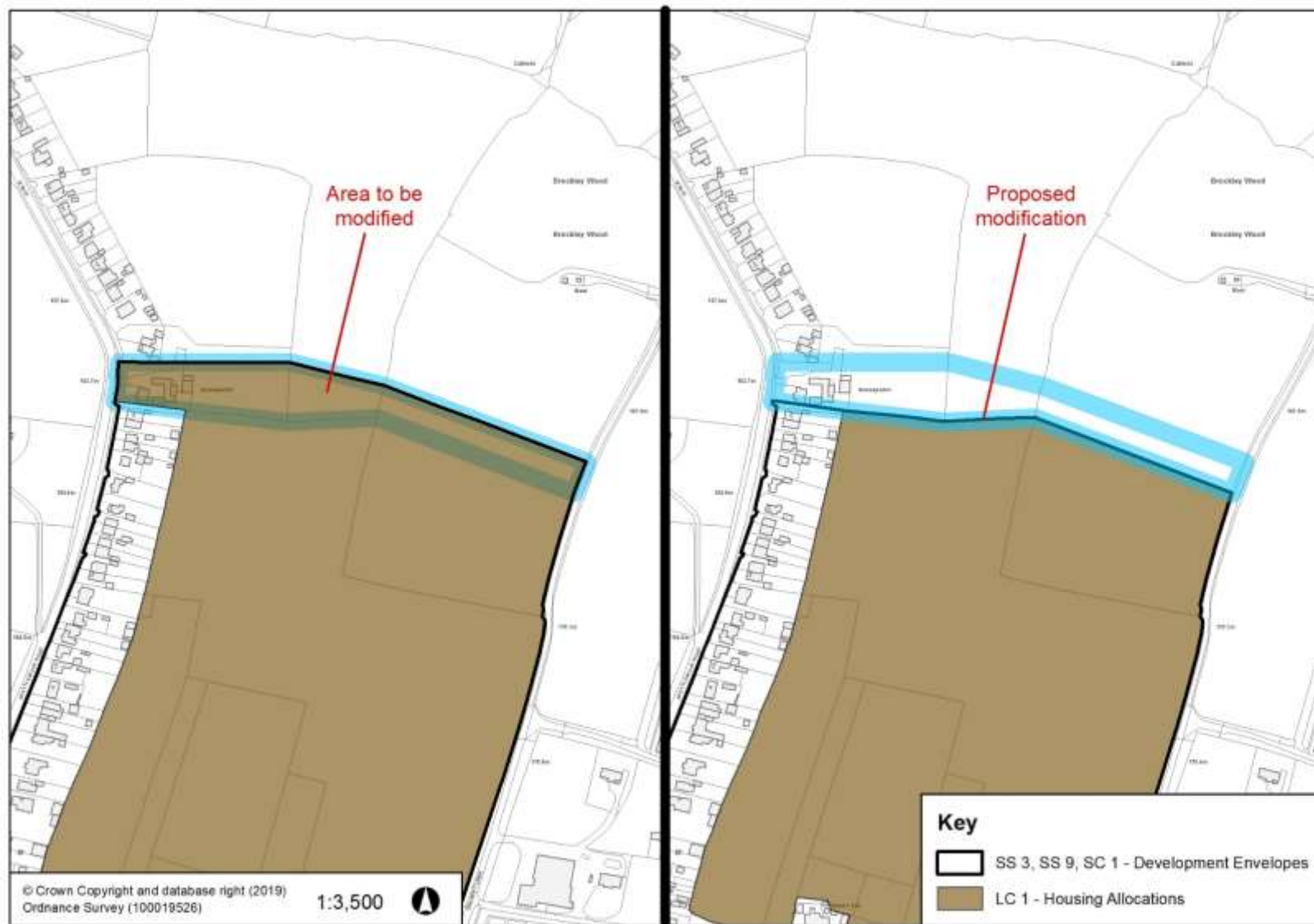
Appendix 2 – Amendment to the site boundary of the Strategic Site Allocation at Bolsover North [PMC2]



Appendix 3 – Addition of an Area of Transition to the Strategic Site Allocation: Former Whitwell Colliery site and amendment to the Development Envelope to include this Area of Transition and amendment to the Important Open Area to exclude this Area of Transition [PMC3]



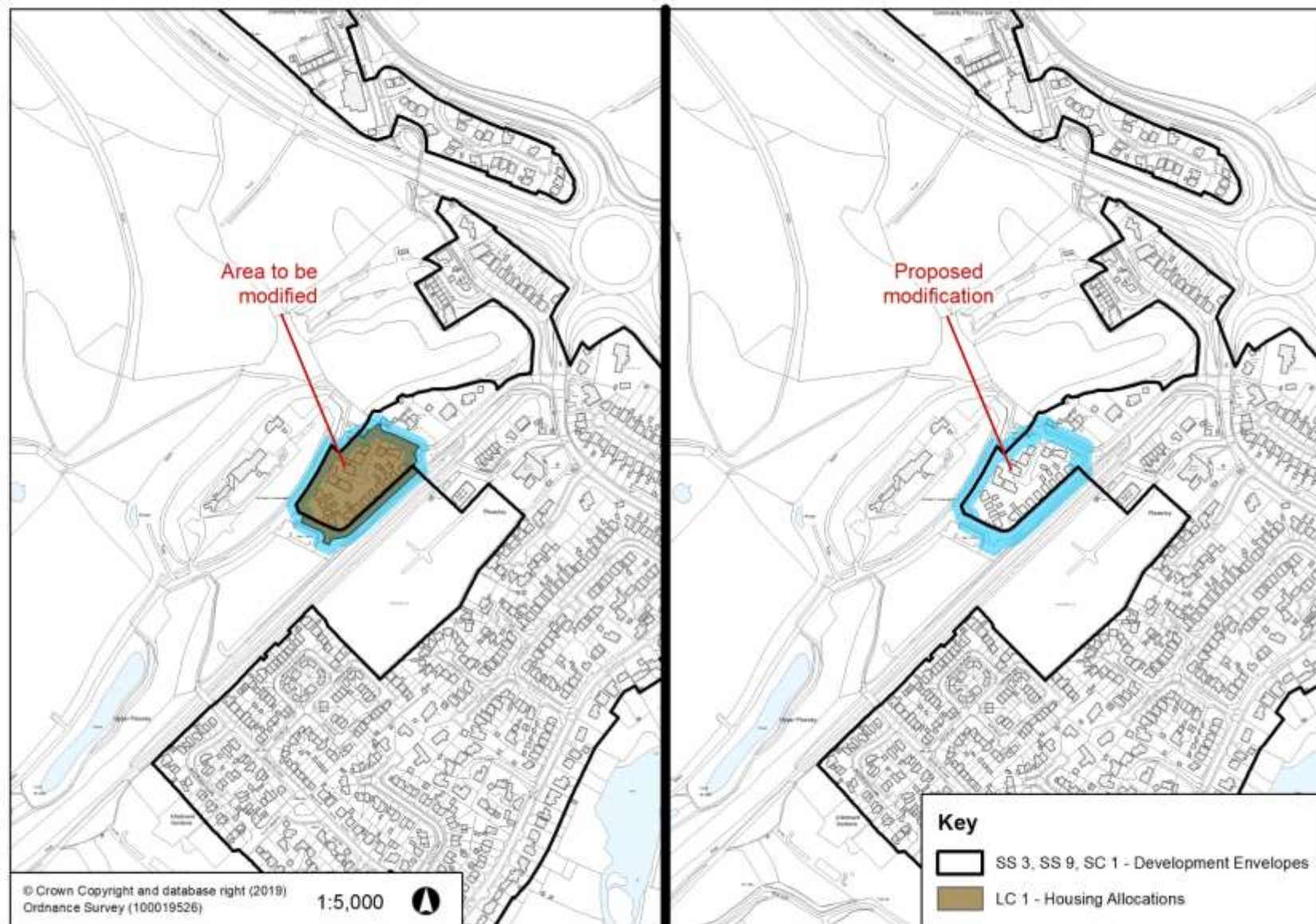
Appendix 4 – Amendments to the Housing Allocation c) Land between Shuttlewood Road and Oxcroft Lane, Bolsover and the Development Envelope [PMC4]



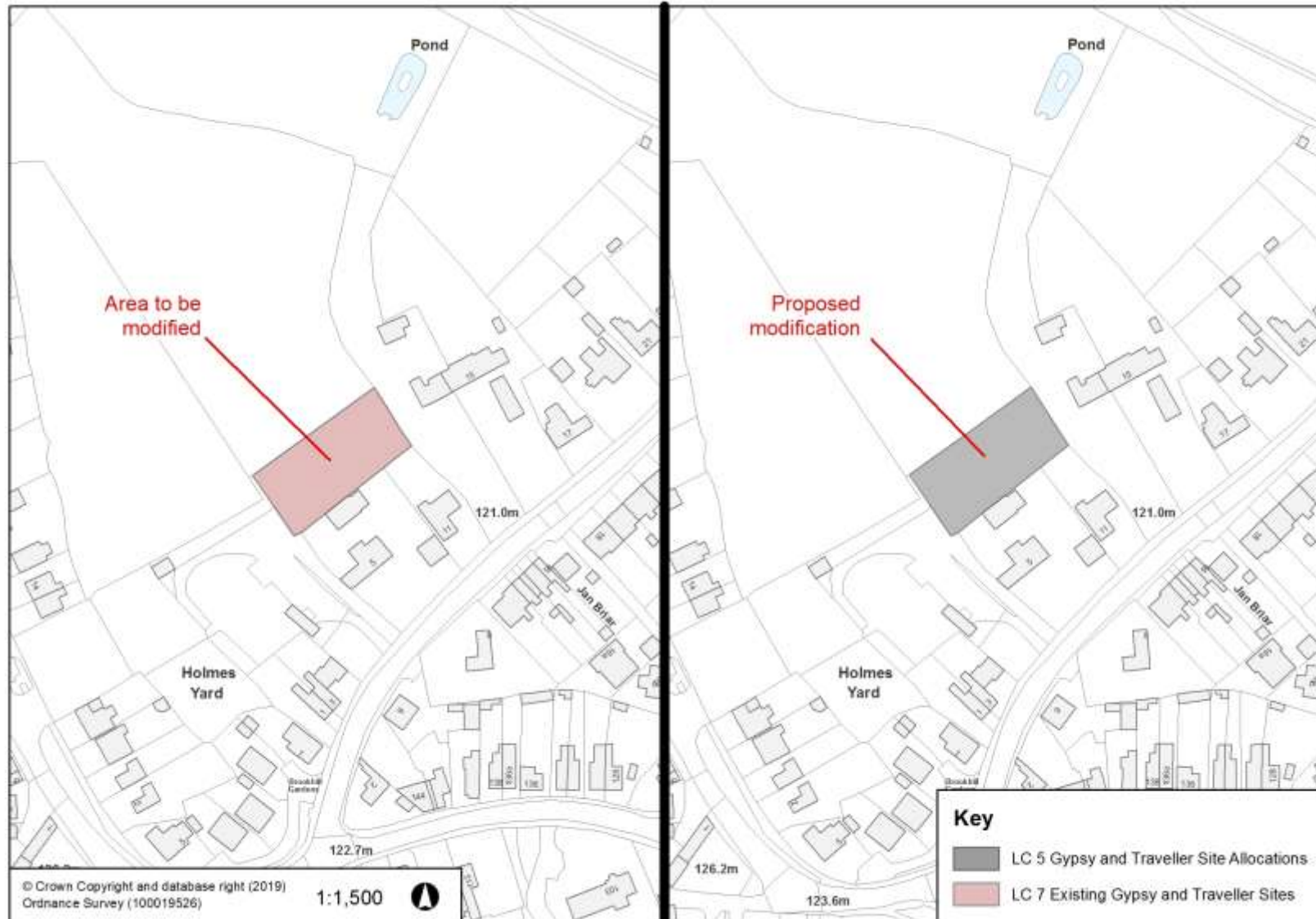
Appendix 5 – Deletion of Housing Allocation s) Land at Glapwell Nurseries, Glapwell, and amendments to the Development Envelope [PMC5]



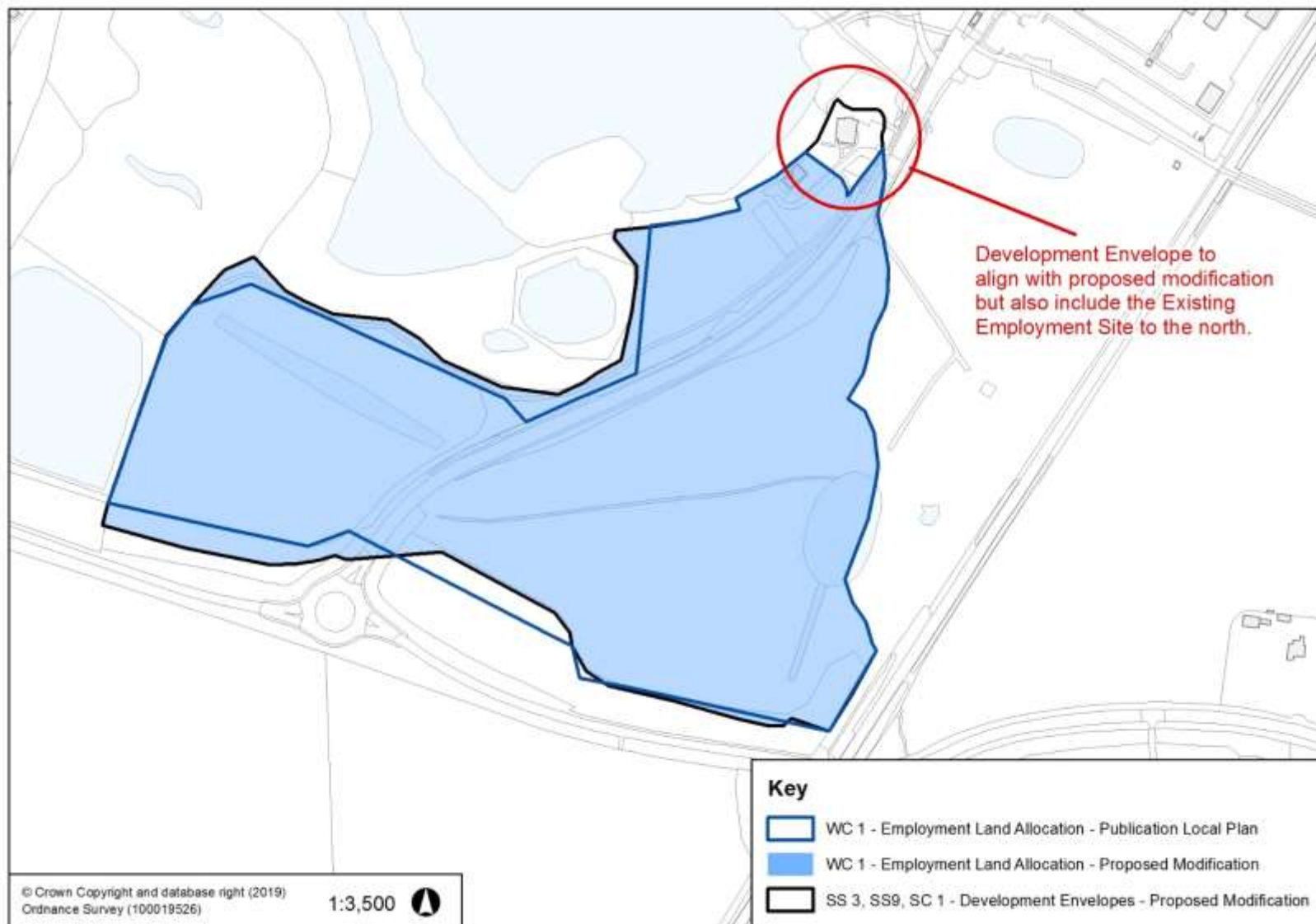
Appendix 6 – Deletion of Housing Allocation v) Land east of Pleasley Pit, Pleasley [PMC6]



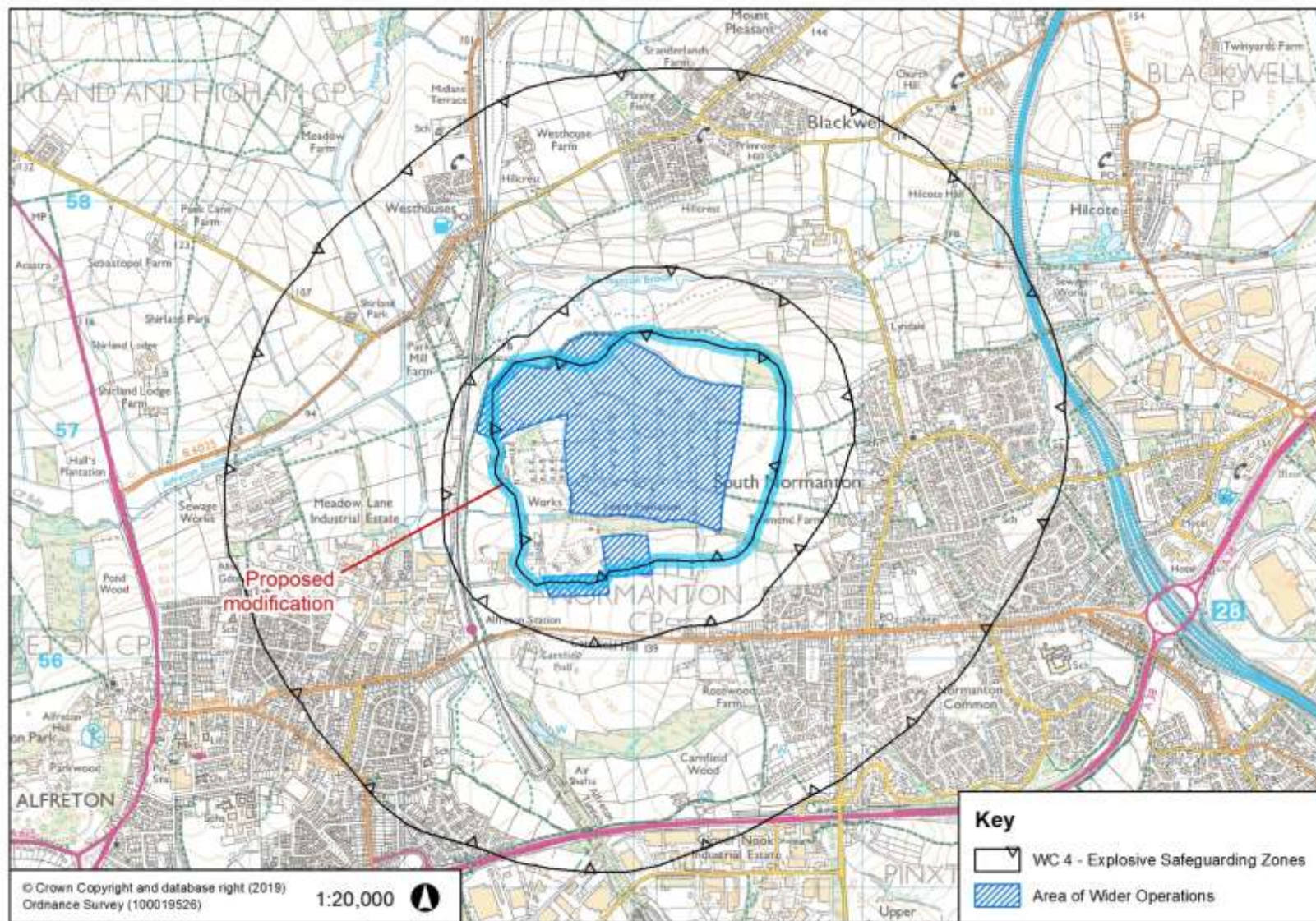
Appendix 7 – Change from an Existing Gypsies and Travellers Site to a Gypsies and Travellers Site Allocation in Pinxton [PMC7]



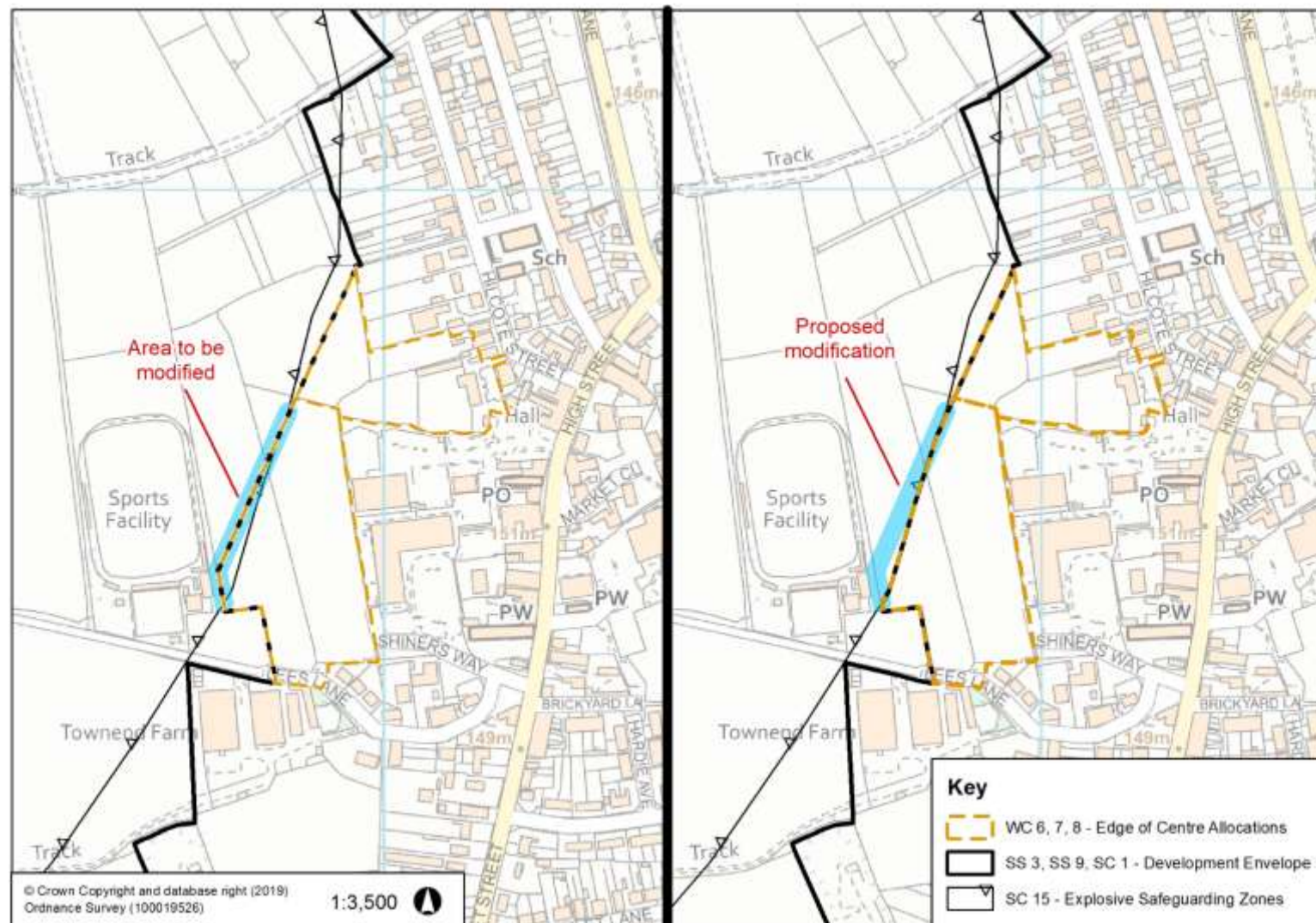
Appendix 8 – Amendment to the Explore Industrial Park Employment Allocation boundary and corresponding amendment to the Development Envelope boundary at Steetley [PMC8]



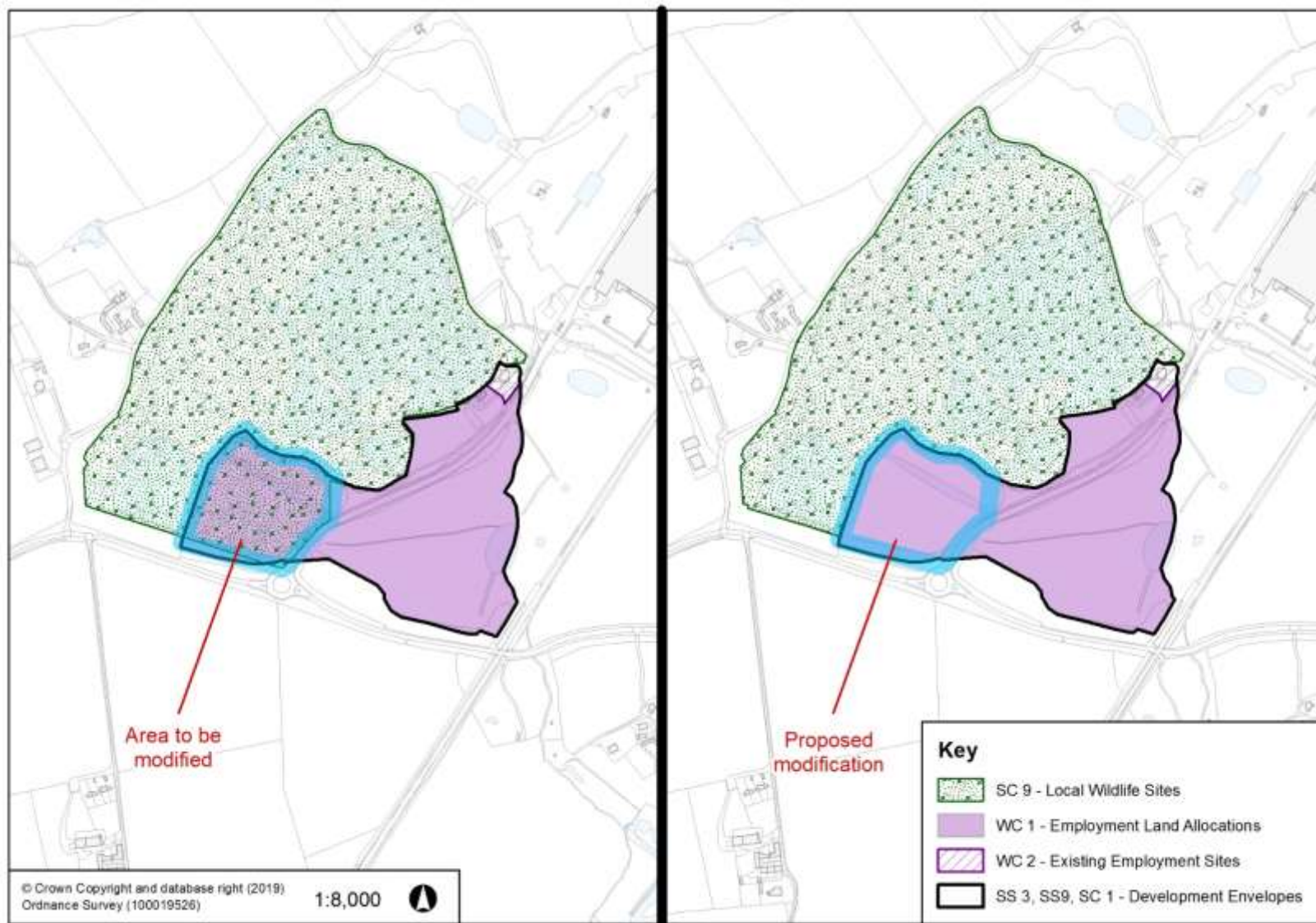
Appendix 9 – Amendment to the Explosive Safeguarding Zones around Rough Close Works, South Normanton and identification of the Area of Wider Operations [PMC9]



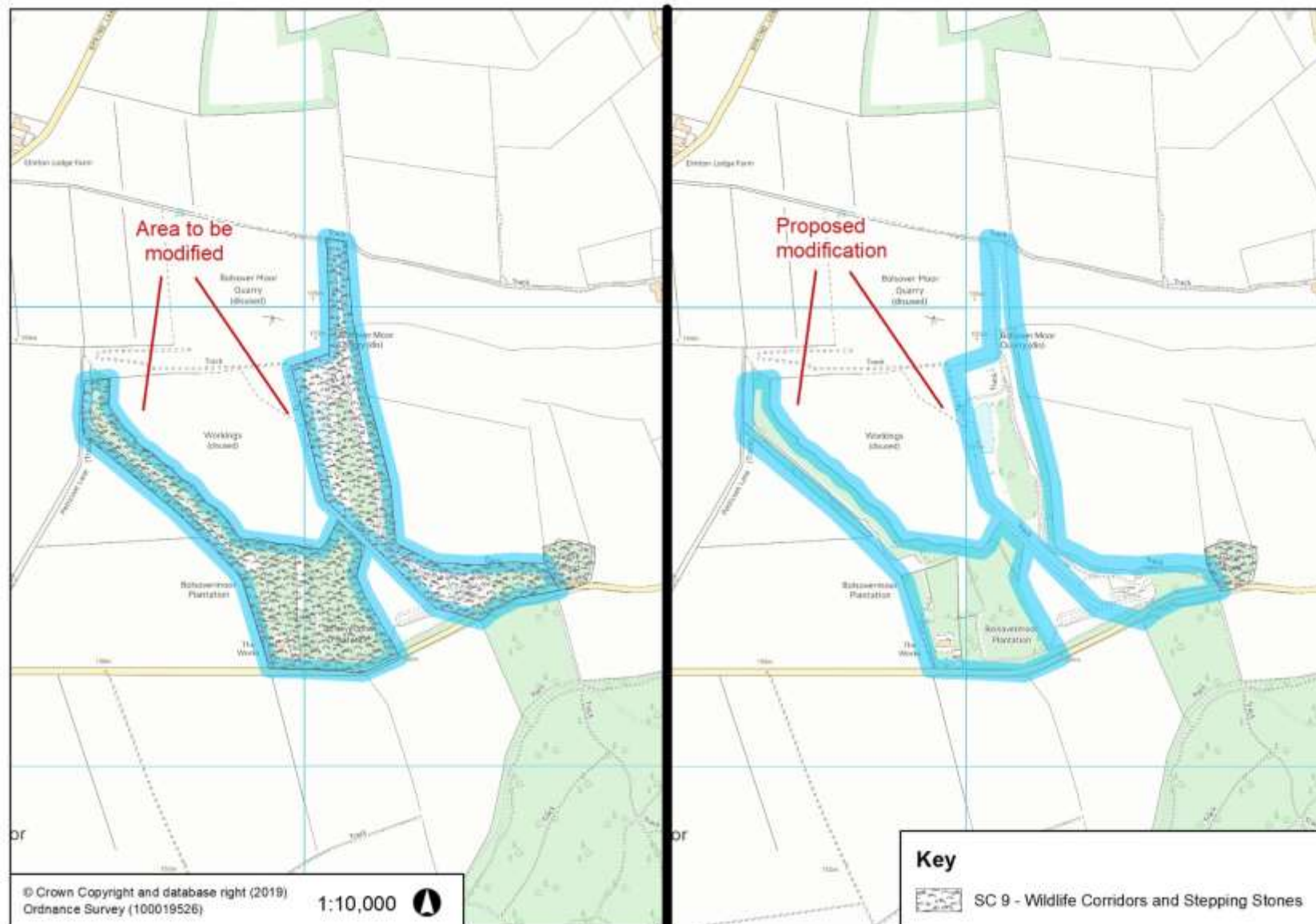
Appendix 10: Amendments to the Edge of Town Centre Allocations in South Normanton and the Development Envelope [PMC10]



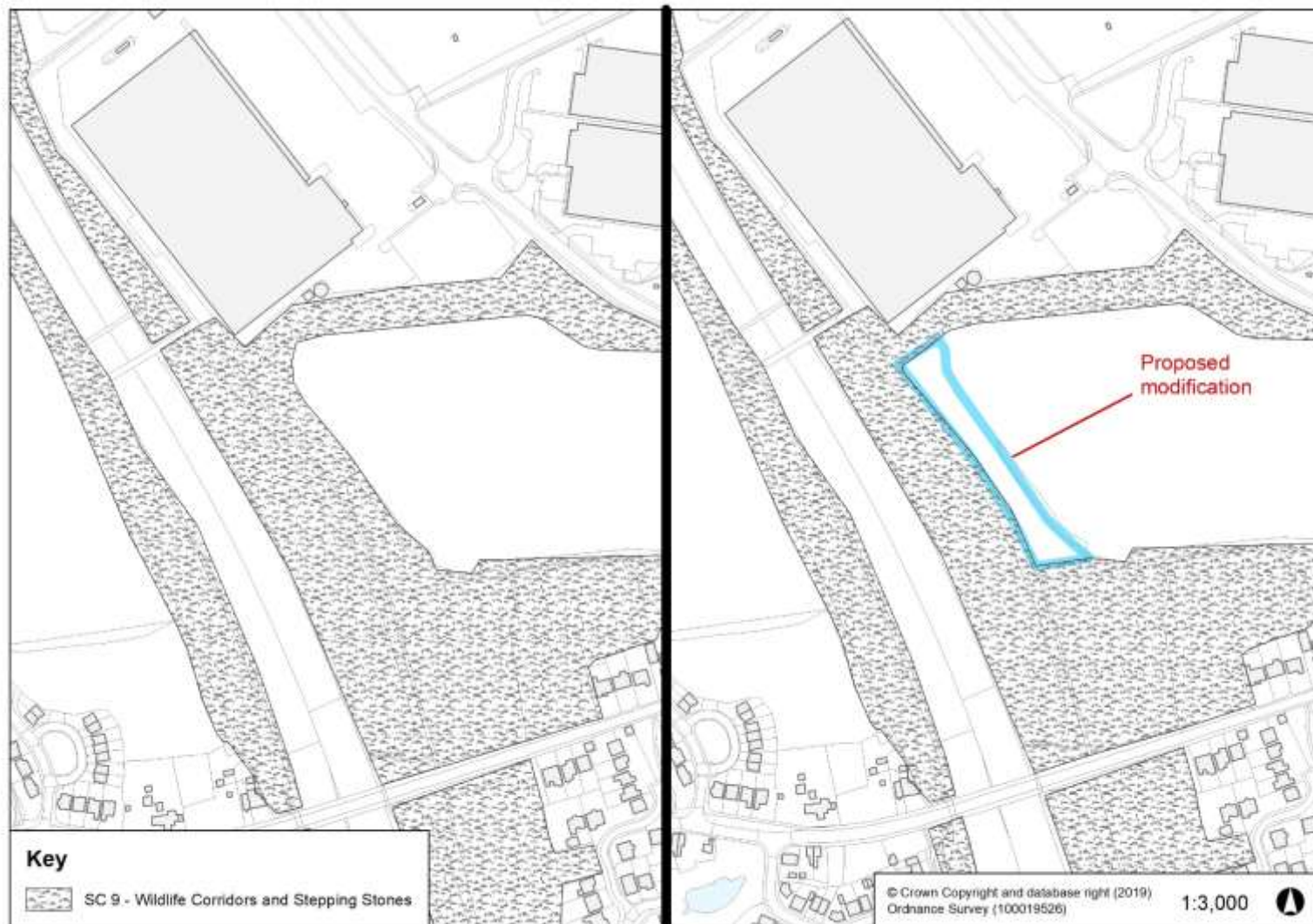
Appendix 11: Deletion of the part of the Local Wildlife Site that is within the Explore Industrial Park Employment Allocation [PMC11]



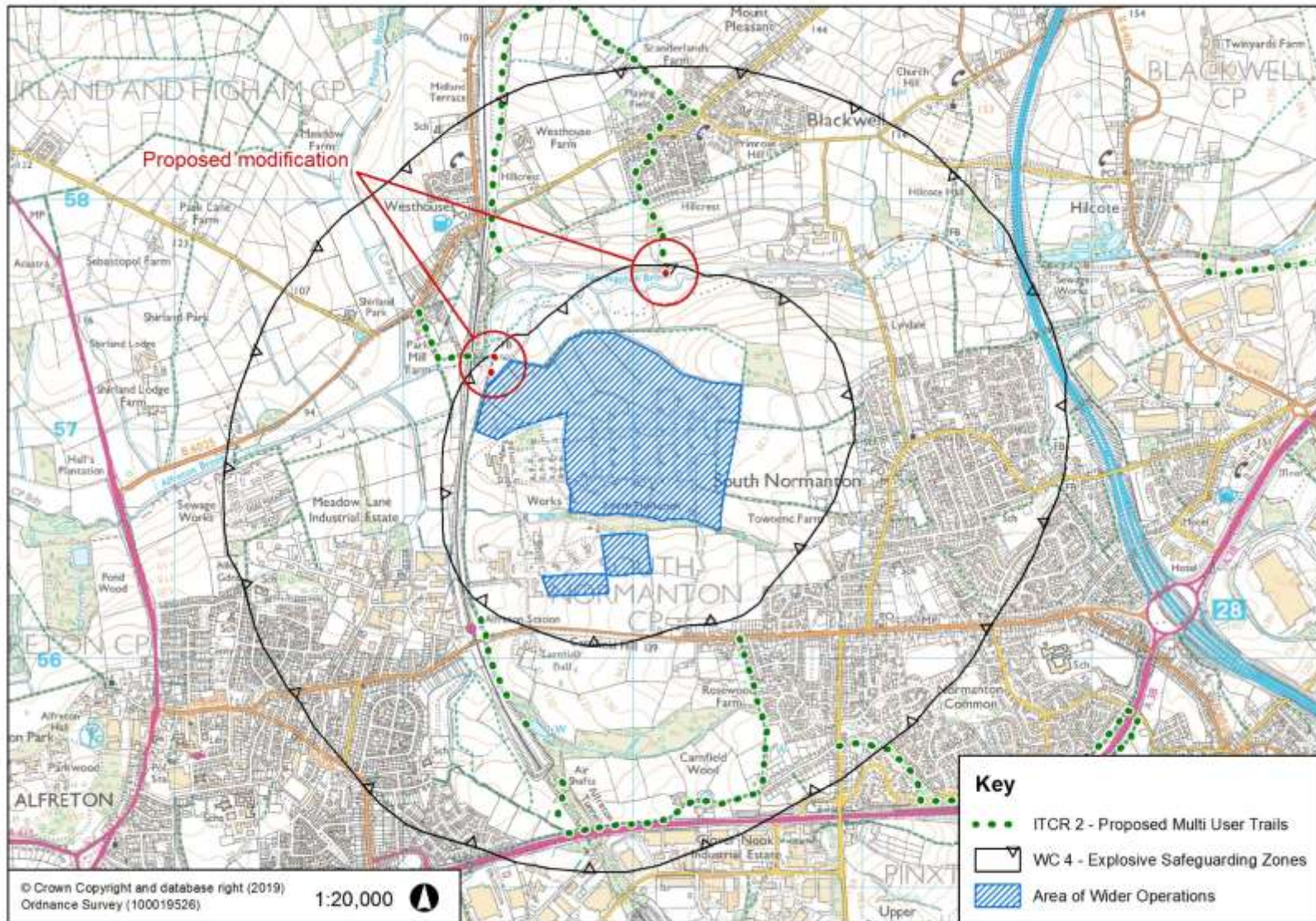
Appendix 12: Deletion of the Wildlife Corridors and Stepping Stones designations at Bolsover Moor Quarry [PMC12]



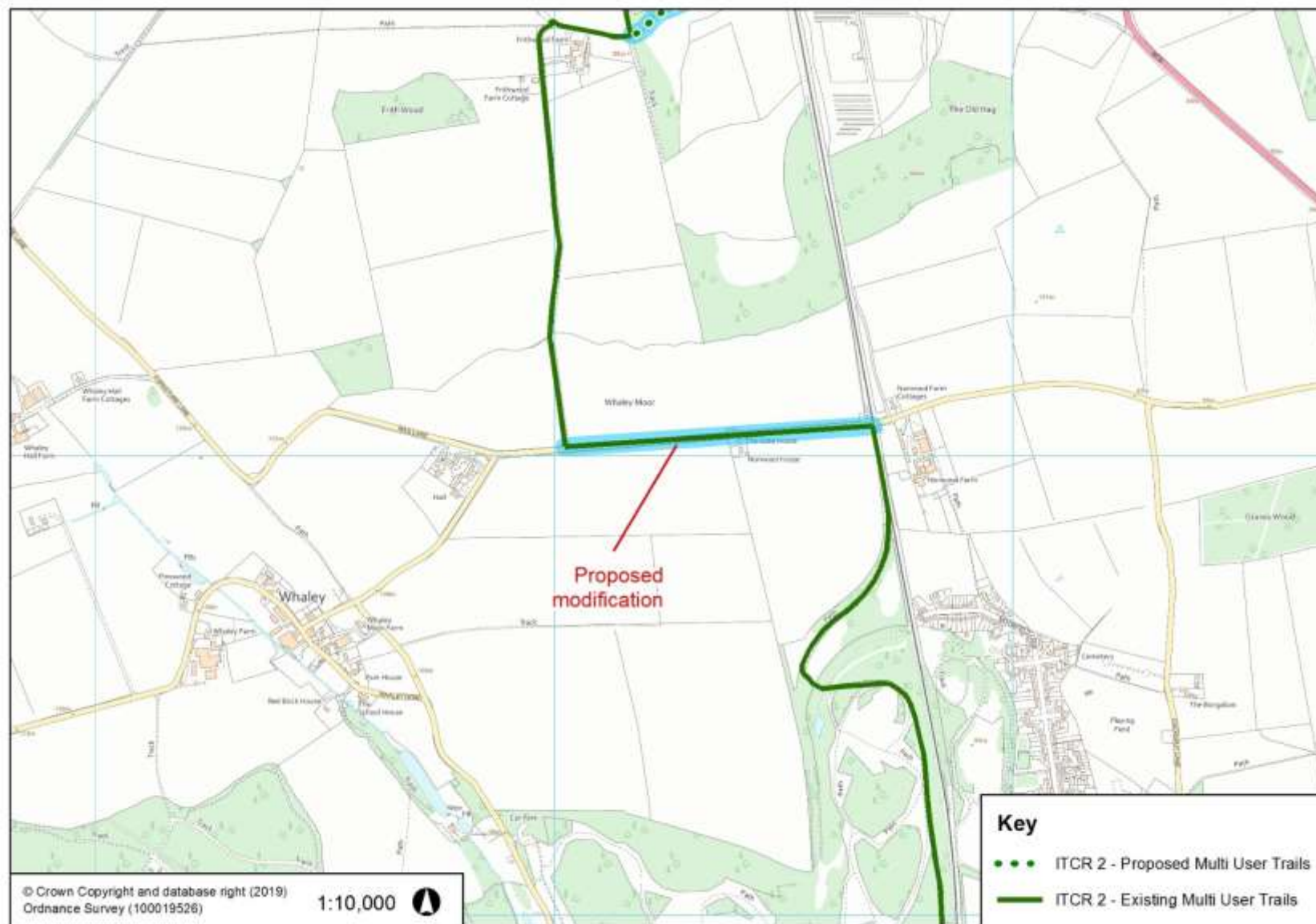
Appendix 13: Deletion of the Wildlife Corridors and Stepping Stones designation at Ball Hill, South Normanton [PMC13]



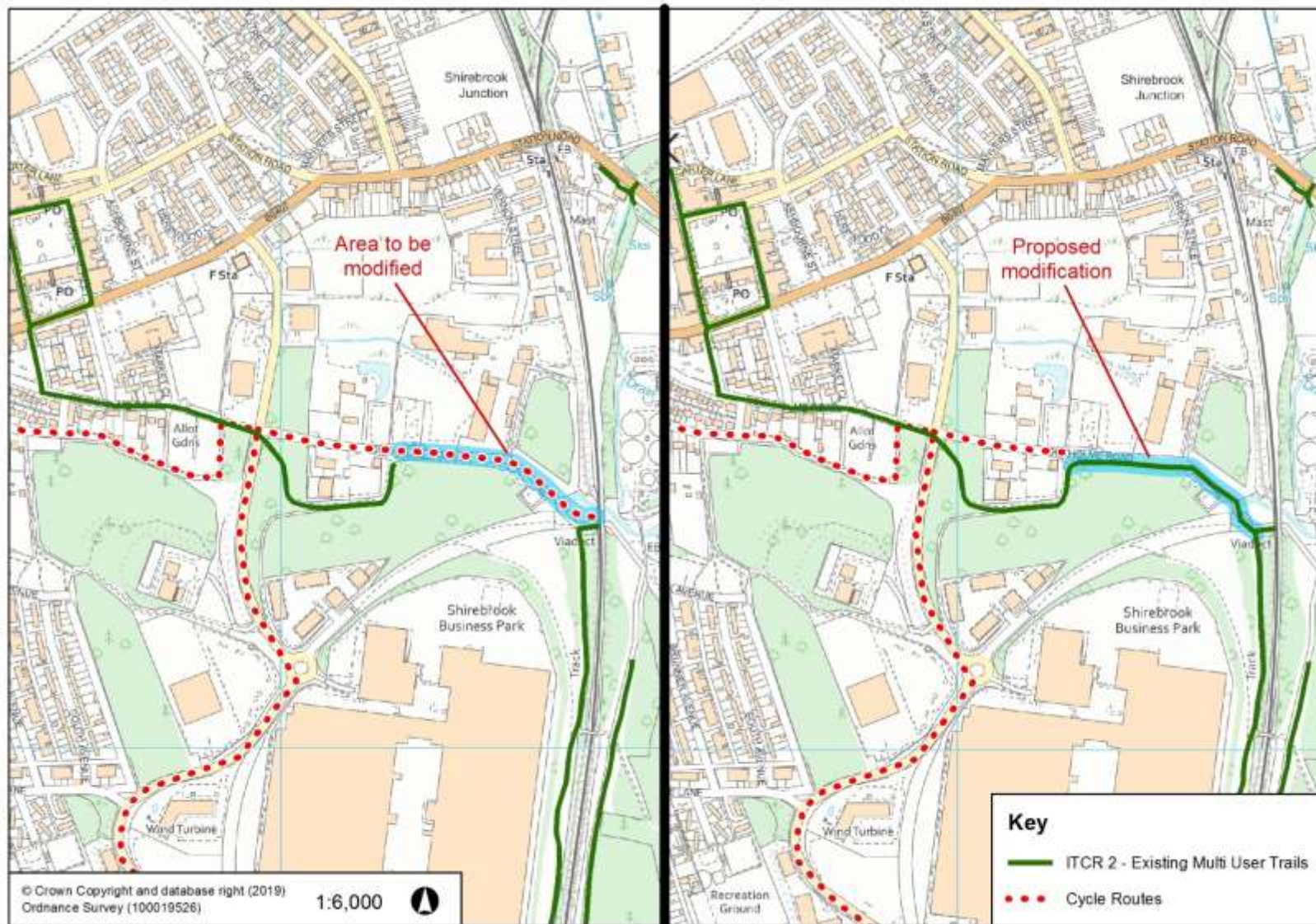
Appendix 14: Deletion of two small distances of Multi User Trails within the inner Explosive Safeguarding Zone around Rough Close Works, South Normanton [PMC14]



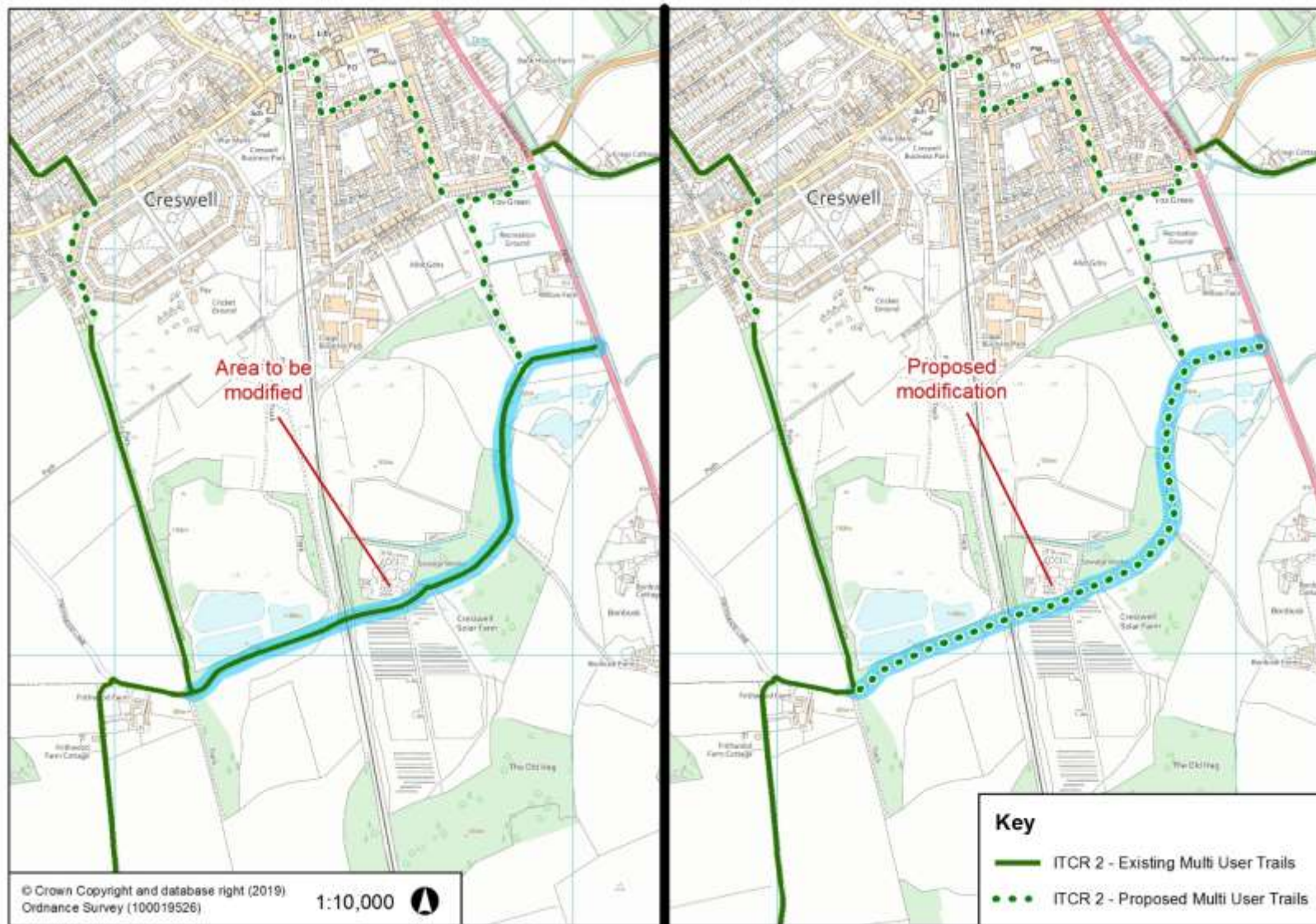
Appendix 15: Amendment to the Multi User Trail to include Mag Lane, Langwith [PMC15]



Appendix 16: Amendment to Cycle Routes to delete Sookholme Road, Shirebrook and amendment to the Existing Multi User Trails to include Sookholme Road, Shirebrook [PMC16]



Appendix 17: Amendment to the Existing Multi User Trails to delete Frithwood Lane, Creswell and amend the Proposed Multi User Trails to include Frithwood Lane, Creswell [PMC17]



Appendix 18: Add a new Proposed Multi User Trail East of Henny Moor Farm to Hodthorpe [PMC18]

